



Philatelic and Related Knowledge, Personal Study and Research

Frank Walton RDP FRPSL

Middlesbrough, February 2016

Sponsored by Grosvenor Philatelic Auctions

Objectives of Session

- ▶ We are not discussing generic research
- ▶ We are discussing philatelic knowledge and research in competitive exhibits
- ▶ Objectives are to explain what is meant by philatelic knowledge and to discuss ways to demonstrate and improve this in exhibits

FIP Definitions

- ▶ Knowledge is the degree of knowledge of the exhibitor as expressed by the items chosen for display and their related description
- ▶ Personal Study is the proper analysis of the items chosen for display
- ▶ Research is the presentation of new facts related to the chosen subject

Weighting of Marks ~ FIP

Treatment	20
Philatelic Importance	10
Philatelic and Related Knowledge, Personal Study and Research	35
Condition	10
Rarity	20
Presentation	5
Total	100

Weighting of Marks ~ UK

Knowledge and Research			
Knowledge	20		
Research/Personal Study	15	35	

- ▶ The ABPS scoresheets sensibly break the 35 marks down into two categories.

Three Basic Areas

- ▶ Implicit knowledge – choice of material for exhibit
- ▶ Explicit knowledge – explanation of material shown
- ▶ Personal Research/Study
 - New discoveries
 - Revision or correction of prior work
 - Censuses of shown material

Knowledge in Well-known Fields

- ▶ Where a subject has been significantly researched previously, an exhibit showing new research and results should be rewarded especially
- ▶ In such highly researched areas it may well be unrealistic to expect an exhibitor to develop new findings, and thus to gauge knowledge, the judge considers how well the exhibitor has made use of these resources.

Traditional Knowledge

- ▶ Only the knowledge documented in the exhibit can be judged
- ▶ Not only the background information about the postage stamps but also about the rates, routes, postmarks etc is the best way to show the overall knowledge of the exhibitor

Traditional Knowledge

- ▶ The write up doesn't need to describe the clearly visible facts
- ▶ All philatelic background information demonstrates the philatelic knowledge of the exhibitor

Traditional Knowledge

The First Victorian Keyplate 1872 to 1896

1884 UPU Specimens. Crown CA Watermark.

The UPU started the exchange between member countries in 1879. On 18 June 1884 Sierra Leone became the first British Colony to contribute stamps overprinted SPECIMEN. The number of copies distributed by the UPU varied, with one copy sent for each of the members in 1884 and three from 1885 to 1891.



Samuel Type D11 and Perf 14.



Samuel Type D11 and Perf 12.

Traditional Knowledge

The First Victorian Keyplate 1872 to 1896

1884 UPU Specimens. Crown CA Watermark.

The UPU started the exchange between member countries in 1879. On 18 June 1884 Sierra Leone became the first British Colony to contribute stamps overprinted SPECIMEN. The number of copies distributed by the UPU varied, with one copy sent for each of the members in 1884 and three from 1885 to 1891.



The majority of the specimens were overprinted Samuel Type D11 and Perf 14.



A few examples are overprinted Samuel Type D11 and Perf 12. Only three sets are recorded.

The initial printing of the ½d, 1d, 2d and 4d UPU standard colours was on 15 May 1884. When 100 copies overprinted SPECIMEN were needed the next month to send to the UPU, the printers had limited stock and were forced to use whatever stamps were to hand. Items that had probably been trial printings were used. Overprint Type D11 and the slightly thicker Type D12 exist, and both Perf 12 and 14 can be found.

Postal History Knowledge

- ▶ The proper evaluation will be based on the relevant description of each philatelic object shown
- ▶ Exhibitors should bear in mind that the information given should not overwhelm the philatelic material shown

Postal History Knowledge

CNAC to Hong Kong, BOAC or Air France to Europe



4 September 1947 ~ Shanghai to Dundee, Scotland.

Postal History Knowledge

CNAC to Hong Kong, BOAC or Air France to Europe



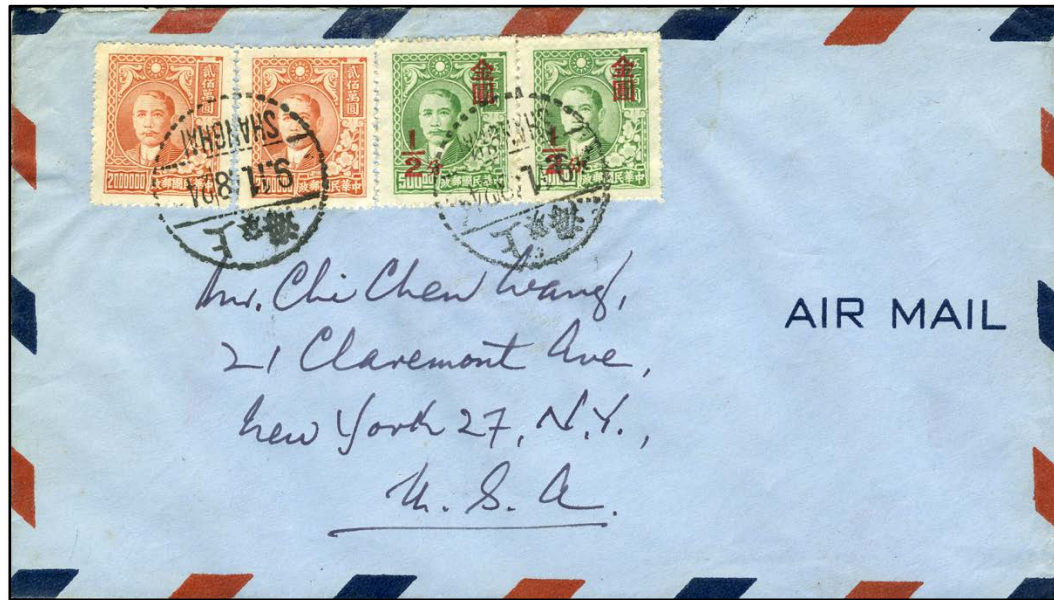
4 September 1947 ~ Shanghai to Dundee, Scotland.

Rate from 1 July 1947 to 1 October 1947: Surface mail \$1,110 first 20g + \$700 for extra 20g, plus 6 x \$2,100 per 5g air surcharge, plus \$1,600 registration fee.

Total postage \$16,000.

Postal History Knowledge

Direct Trans-Pacific Flight from Shanghai to San Francisco or Seattle

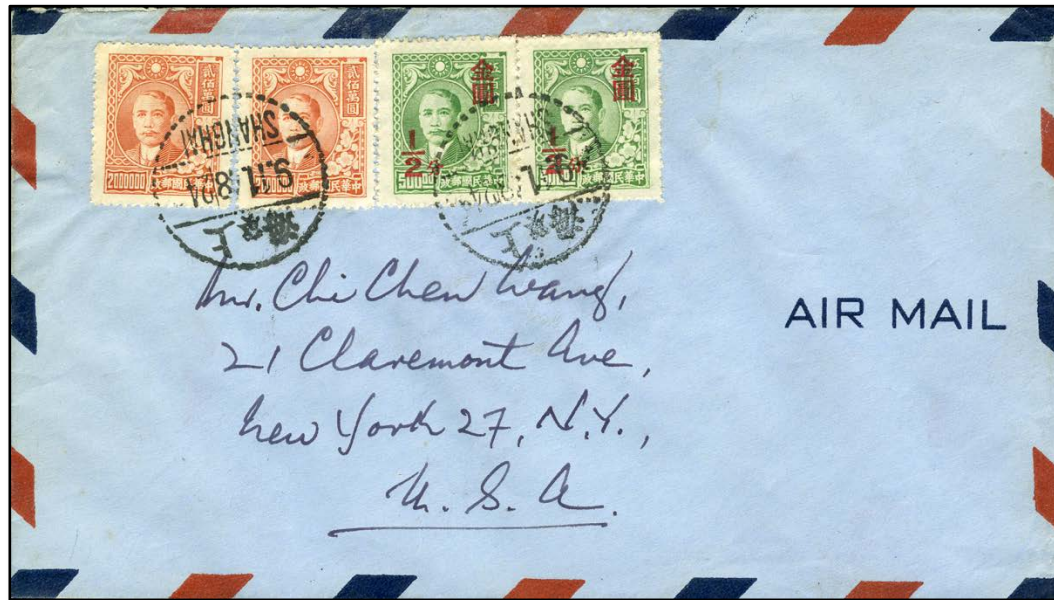


9 November 1948 ~ Shanghai to New York, USA.

Rate from 6 to 19 November 1948 (14 days) \$0.35 surface first 20g plus \$1.00 per 10g air surcharge.

Postal History Knowledge

Direct Trans-Pacific Flight from Shanghai to San Francisco or Seattle



9 November 1948 ~ Shanghai to New York, USA.

Rate from 6 to 19 November 1948 (14 days) \$0.35 surface first 20g plus \$1.00 per 10g air surcharge.

Mixed franking with pair of \$2,000,000 stamps in Chinese National Currency with pair of ½c stamps in Gold Dollars.

The exchange rate between the two currencies was 3,000,000 to 1, making a \$2 million stamp worth 67c.

Hence this letter was correctly prepaid with 2 x 0.67 and 2 x 0.005, totalling \$1.35 for single weight air mail.

Revenue Knowledge

Tasmania Scrip Certificate



Back Creek Gold Mining Company £5 Scrip Certificate
Dated 16 November 1870.

Revenue Knowledge

Tasmania Scrip Certificate



Back Creek Gold Mining Company £5 Scrip Certificate
Dated 16 November 1870.

Five £5 shares valued at £4 4s 6d each, tax paid by 1d and 4d Perf 12.
Perforations by J Walsh & Sons, Hobart under contract for Post Office.
Stamp Act [27 Vic No 38] Scrip shares tax 1d per £1, £5 = 5d duty.

Thematic Knowledge

Elephants



*Carrying Timber on Tusks,
controlled by Trunk*

Similar stamps lithographed after the master stone had been used twice to create individual printing plates.

Carrying Timber with their Trunks

Their immense strength makes elephants ideal for working in the timber industry. Their flexibility enables them to gain access to and work in locations that machines cannot.

Knowledge of theme is shown in serified font.

Philatelic knowledge is shown in sans-serif font.

Marcophily Exhibits

- ▶ Marcophily is one of the three sections within postal history
- ▶ The importance is to show not only all the marks (treatment and rarity), but also the period of use for each postmark (philatelic knowledge)
- ▶ The period of use is very important for prestamp cancellations

Thought for the Day...

- ▶ The total financial cost of high marks for Knowledge and Research is £0.

Sources of Information

- ▶ For basic stamp information: *Stanley Gibbons Catalogues*. However, most successful exhibitors will include much more information than is provided by the standard catalogues.
- ▶ For postage rates: *International Postage Rates 1890s to 1957* by Michael Furfie
- ▶ Specialist Study Circle journals and handbooks

Sources of Information

- ▶ World Wide Web
- ▶ Other exhibits
- ▶ Revenue Society website, or Dave Elsmore's website – exhibits and catalogue
- ▶ National or Royal Philatelic Society libraries
- ▶ RPSL's journals cumulative indexes

Any Questions?